

Economic Development Strategic Plan and Update to the 2018 Comprehensive Plan Public Meeting

Fairfield County, Ohio

March 15th, 2023



Welcome!

County Leadership

Tonight's Meeting

Vince Papsidero, Planning NEXT

Agenda

- **Welcome**
- **Tonight's Meeting**
- **Themes**
- **Mapping Exercise**
- **Adjournment**

Planning NEXT

- Land Use and Coordination

Burgess & Niple

- Transportation and Utilities

Ninigret Partners

- Economics and Housing



Growth is coming, how are we going to deal with it?

Commissioner Jeff Fix

INSERT VIDEO HERE

Project Goals

- **Update the future land use map**
- **Identify priority growth areas**
- **Identify priority locations for economic development**
- **Identify priority locations for housing to attract and support a growing employment base**












Schedule

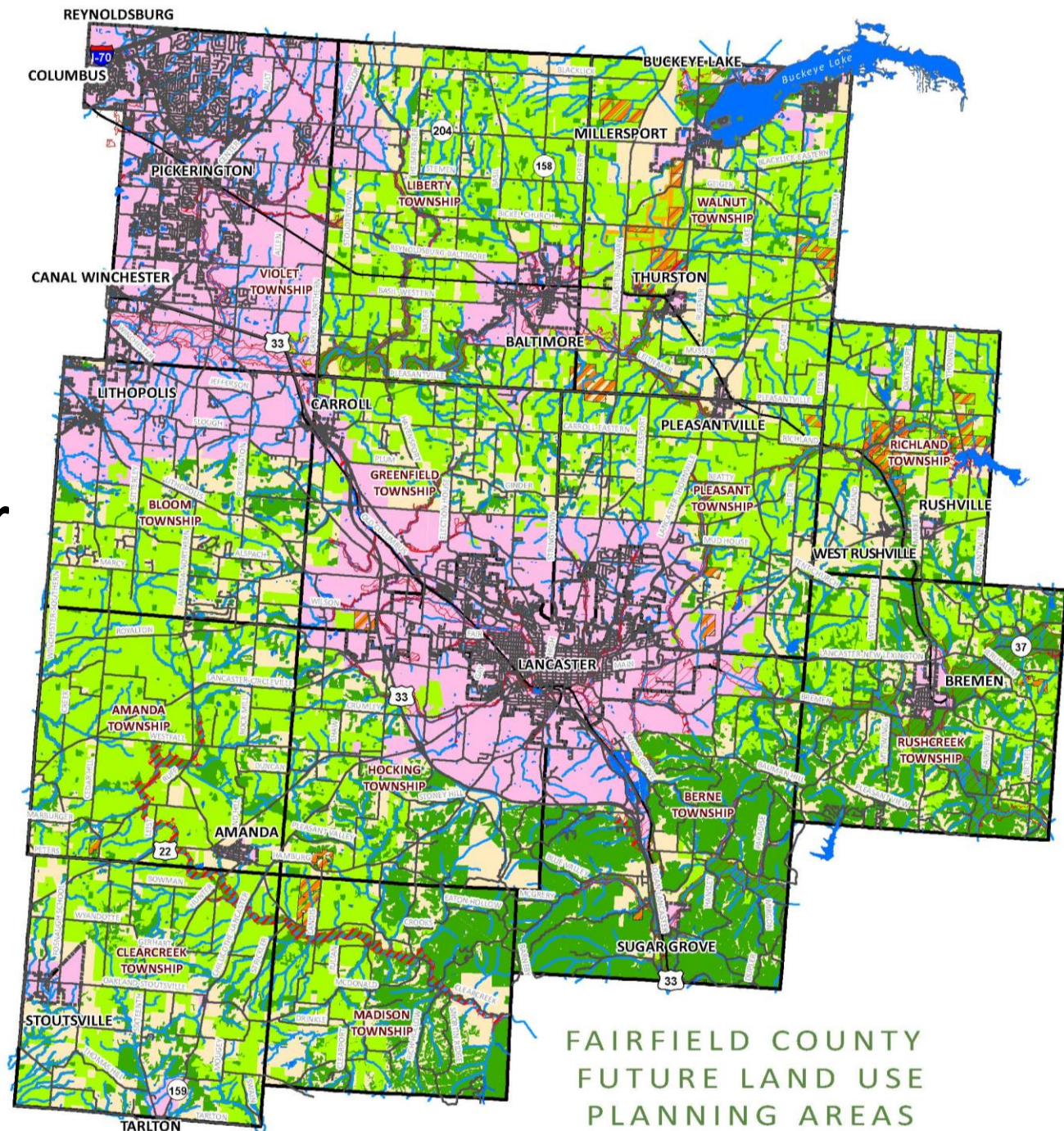
Public Meeting	March
Plan Development	April-June
Public Meeting	June
Adoption	July

Future Land Use 2018

To capitalize on growth opportunities in our urbanized areas while maintaining the natural resources required for our county's long-term sustainability.

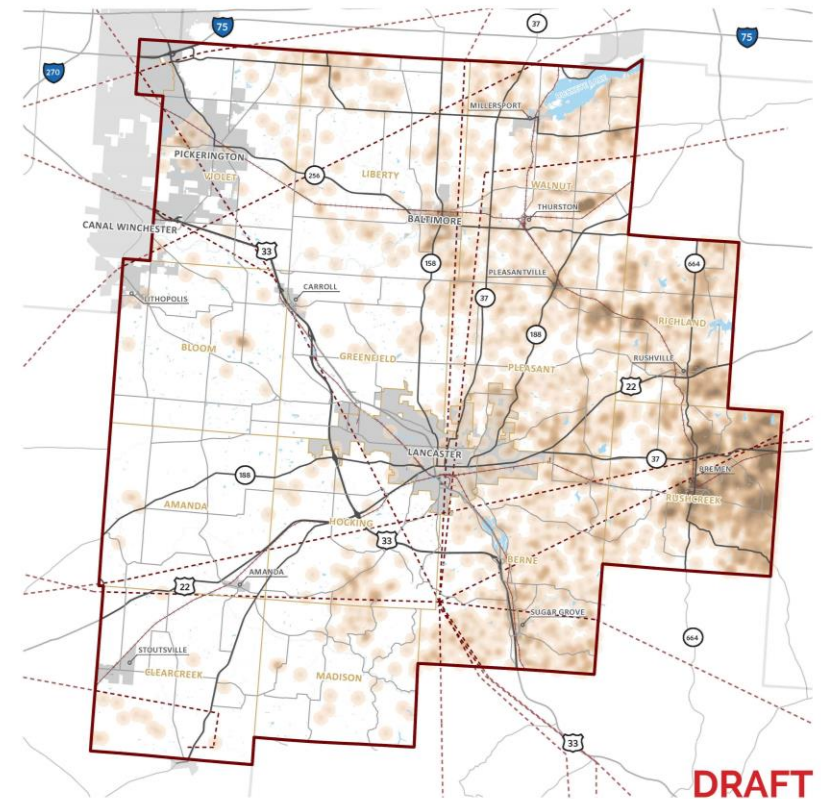
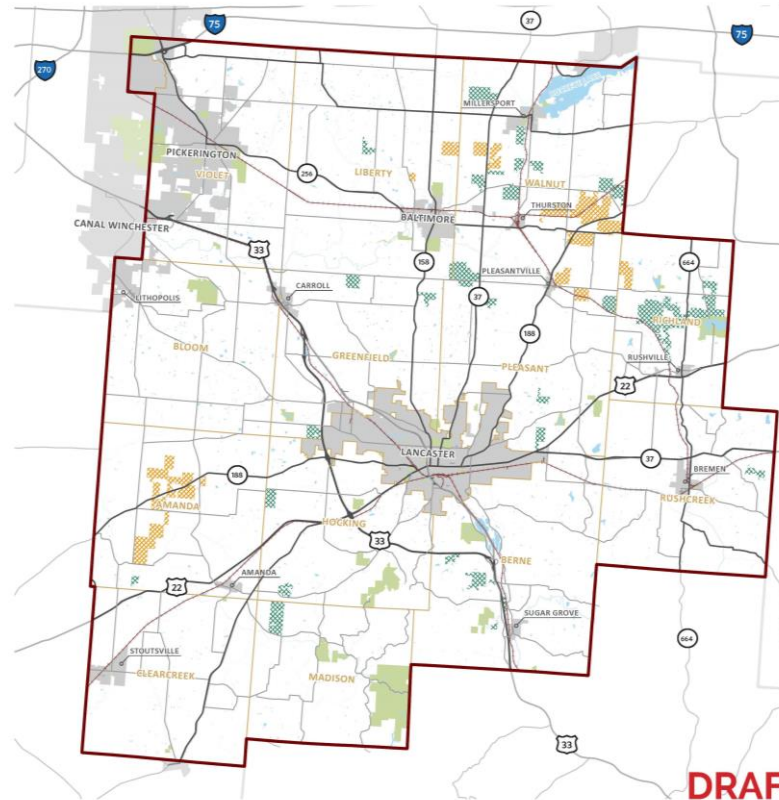
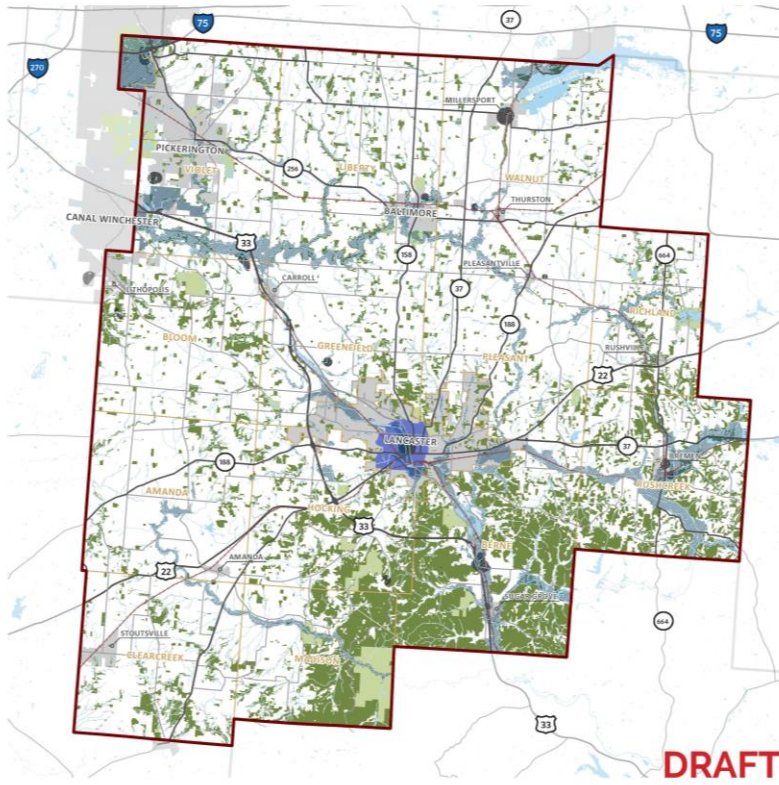
Legend

-  Open Water / Hydrography
-  Roads
-  Railroads
-  Municipalities
-  Townships
-  Flood Hazard Areas
-  Protected Farmland Areas
-  Agricultural Preservation Areas
-  Growth Areas
-  Conservation Resource Areas
-  Rural Management Areas

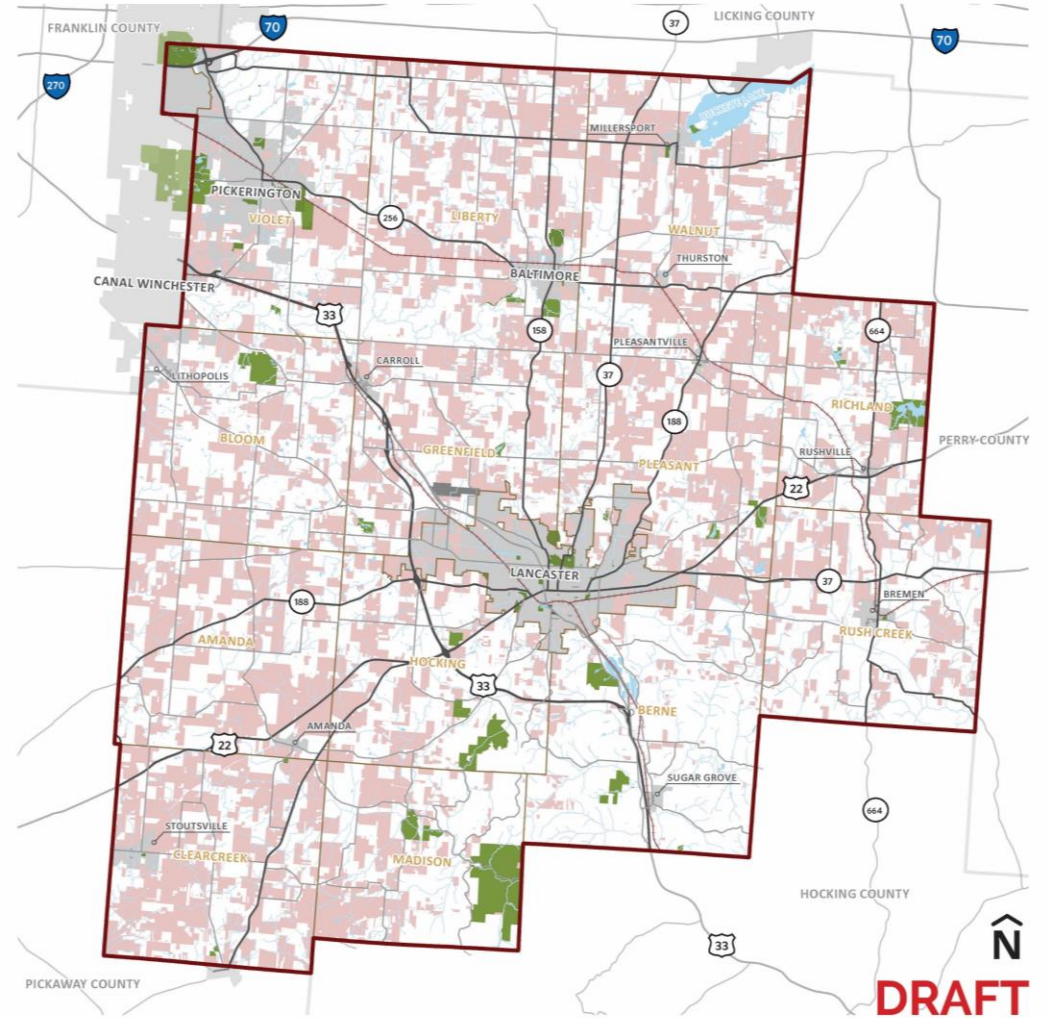
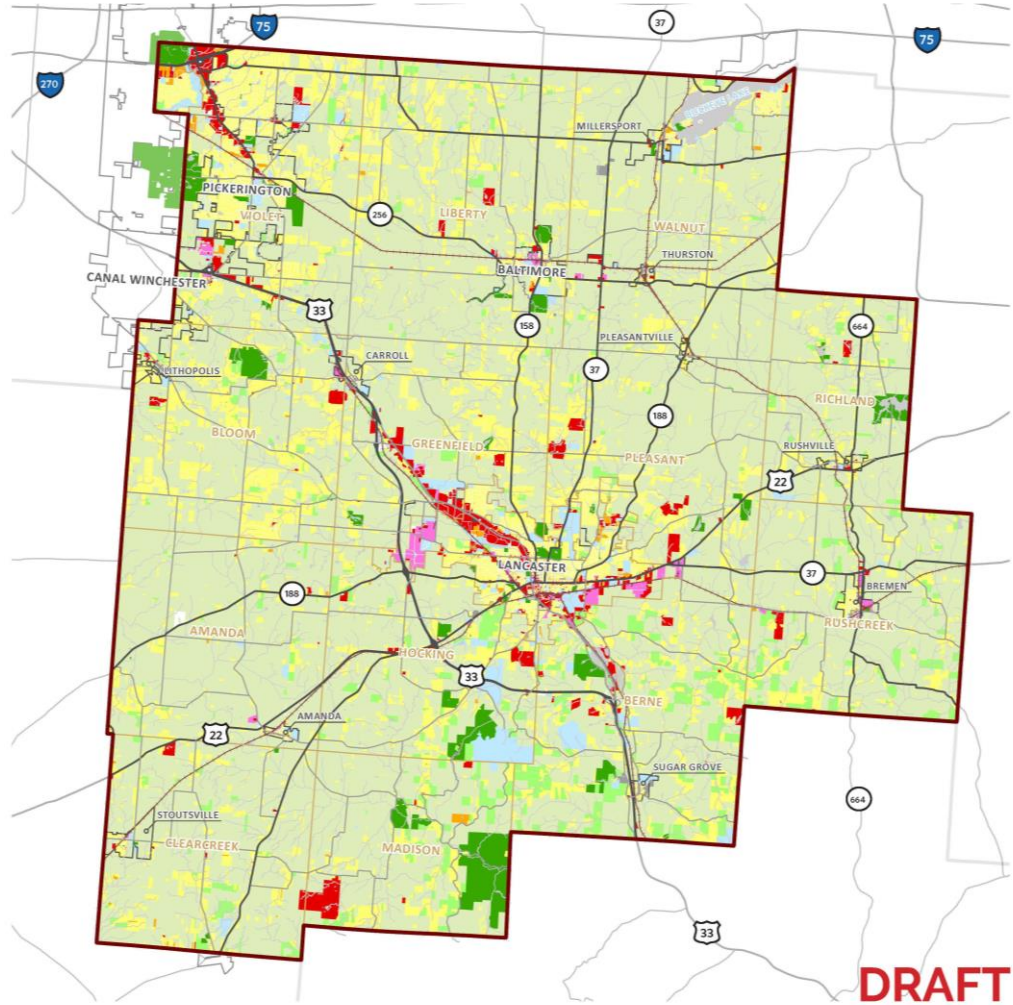


Development Constraints

Flood hazard areas, steep slopes, woodlands, conserved farmland, solar leases, oil and gas facilities, etc.

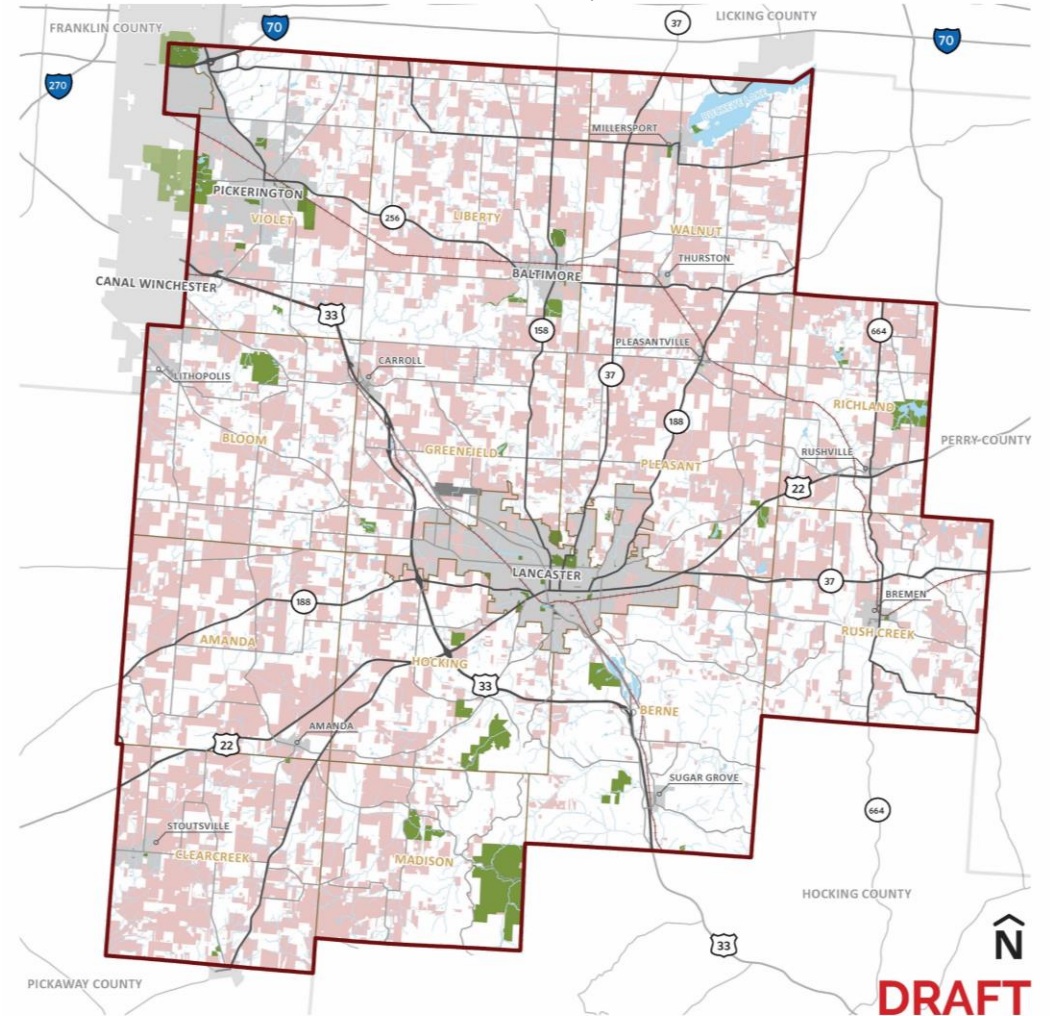
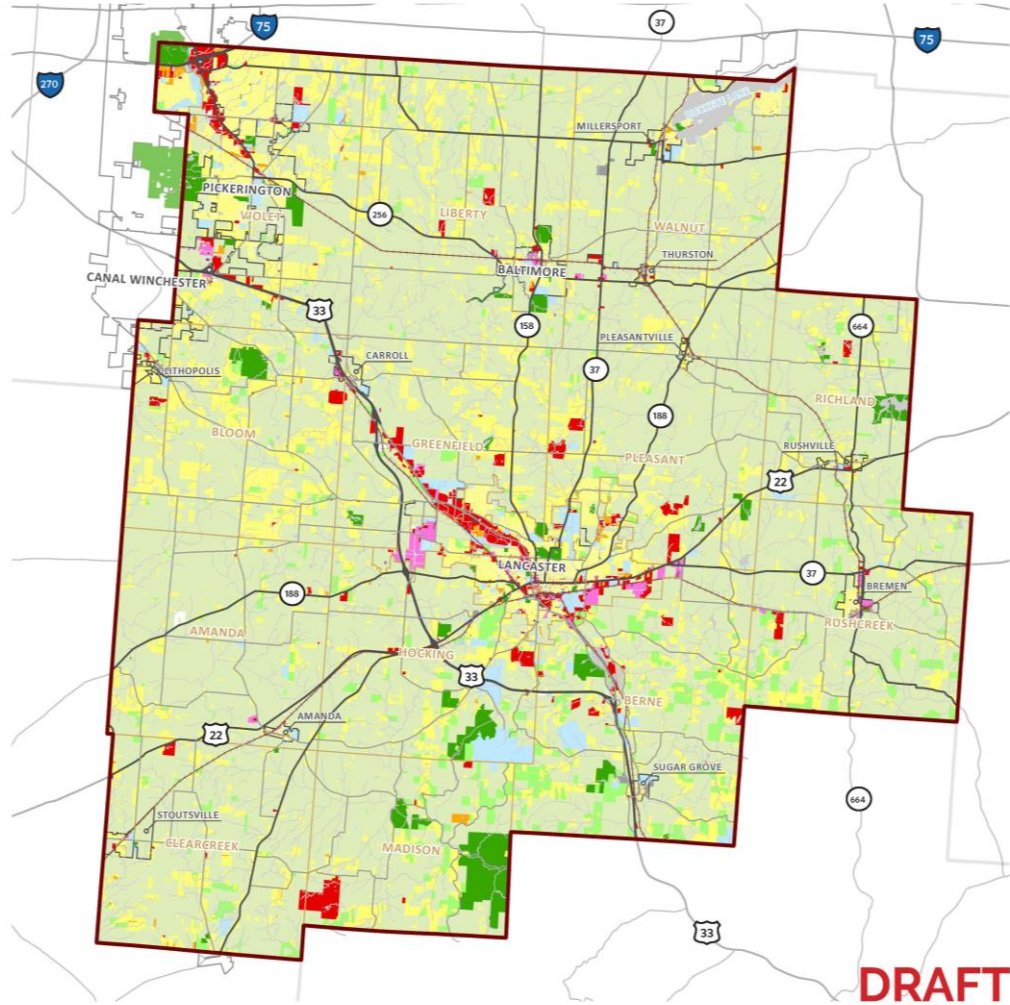


Existing Development

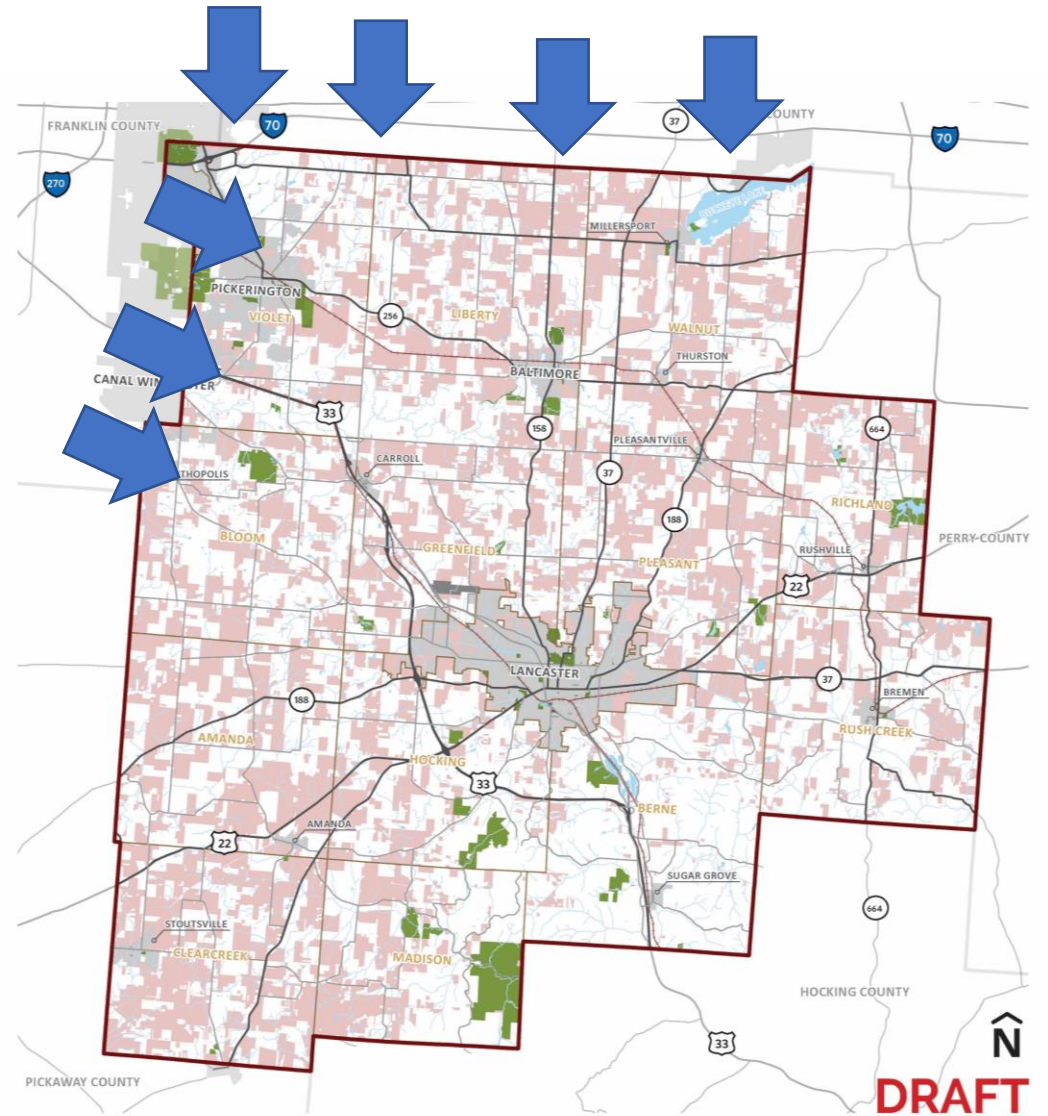
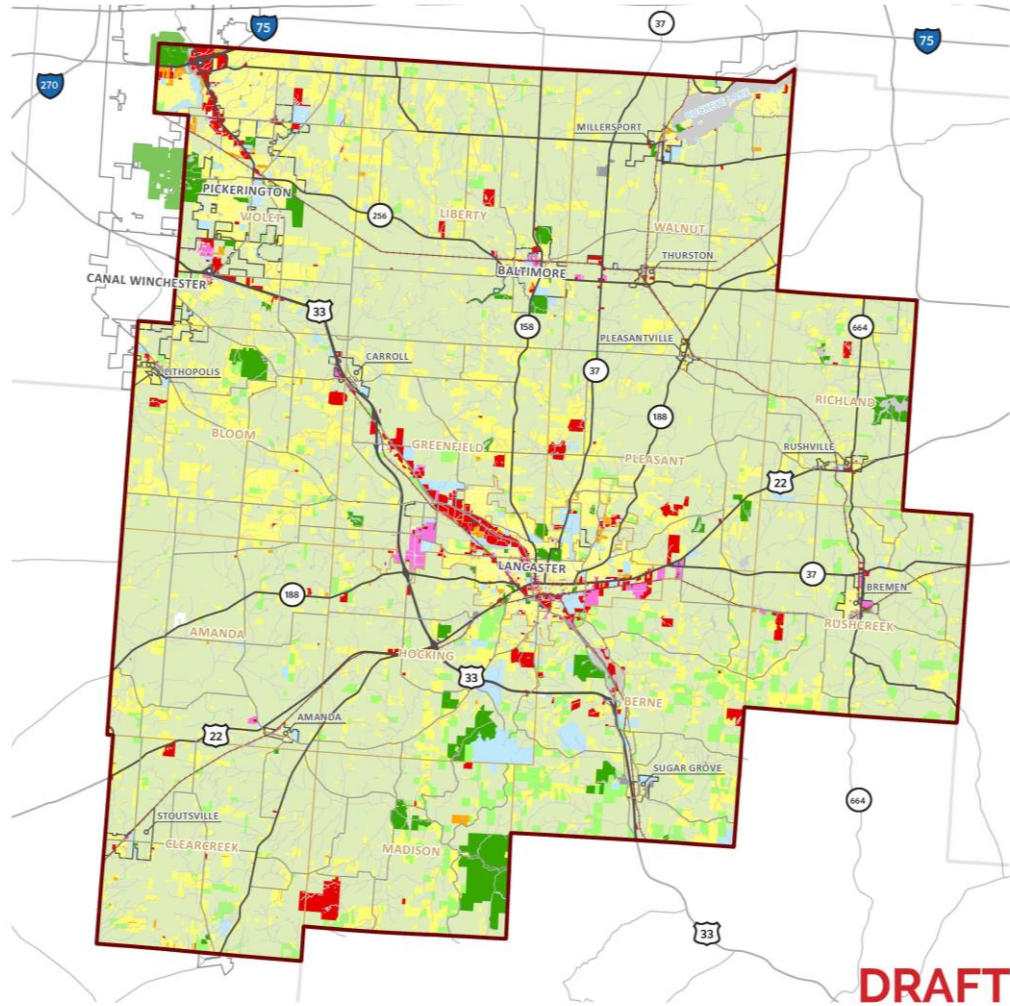


Existing Development

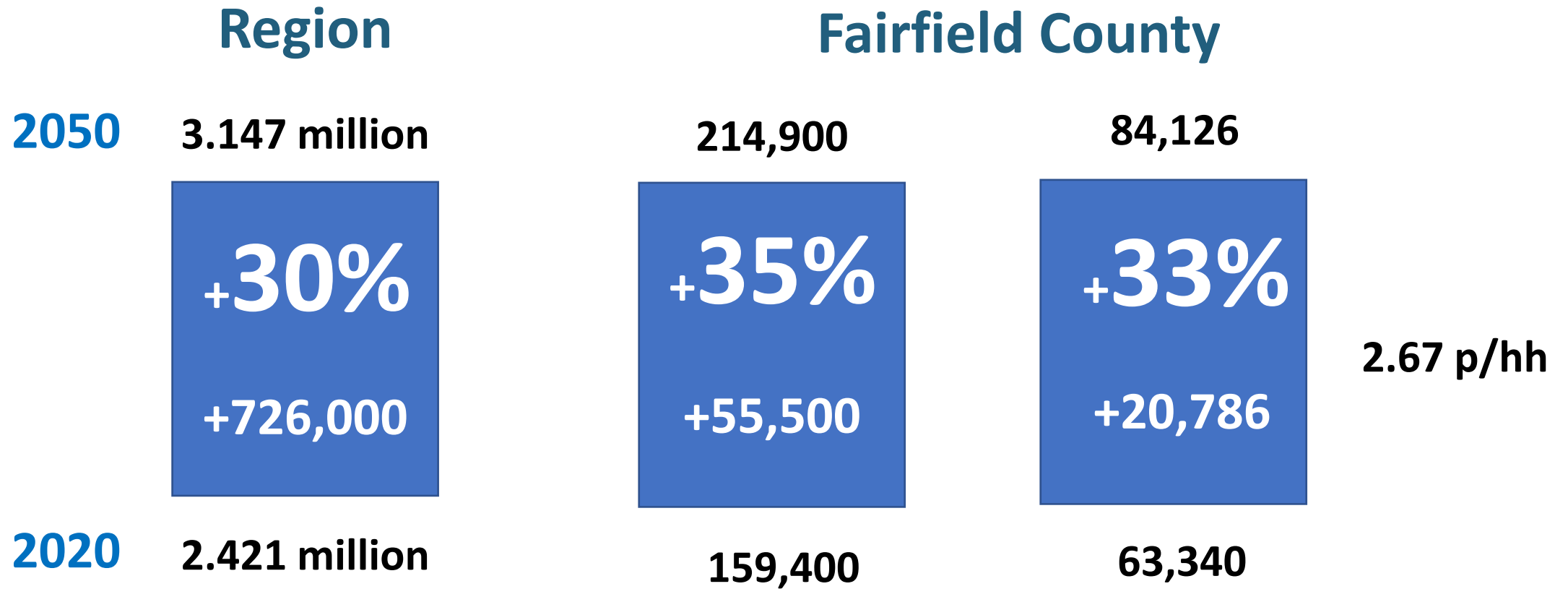
116,000 acres
35%



Existing Development

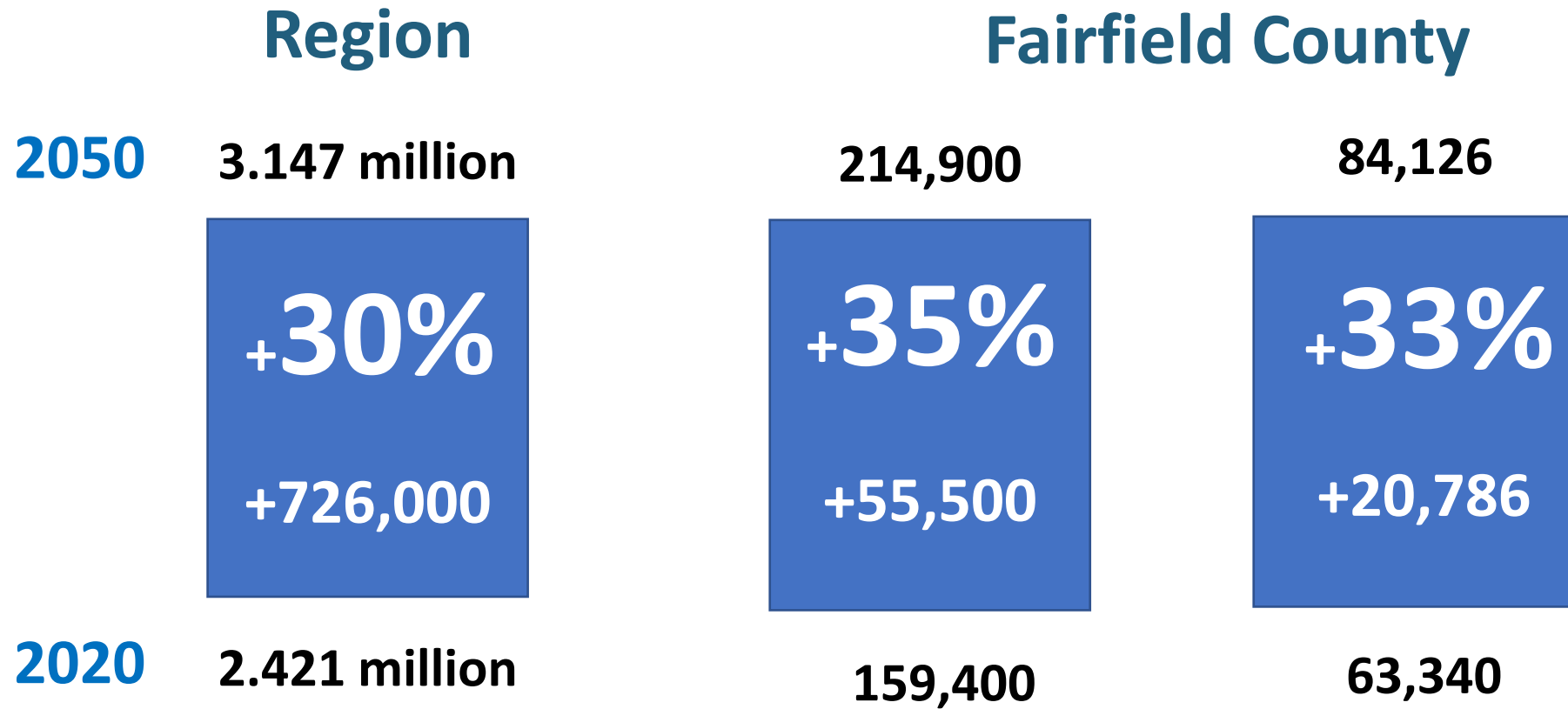


Population Trends 2050



Source: MORPC

Population Trends 2050



If developed at 2 acres per home, would consume 41,572 acres. Liberty Township is 32,000 acres.

Housing Forecast 2032

	Region	Fairfield County
HIGH	193,476	9,470
LOW	138,659	5,973

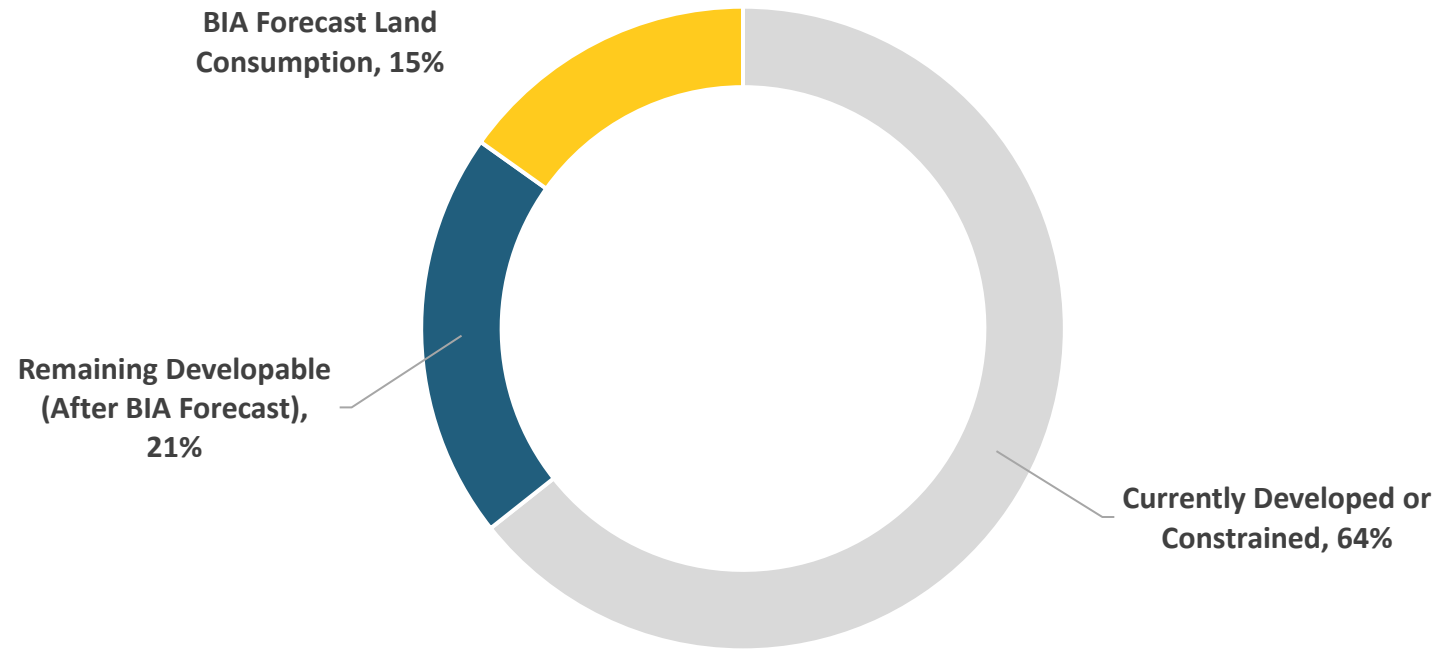
Housing Forecast 2032

	Region	Fairfield County	Acres
HIGH	193,476	9,470	18,940
LOW	138,659	5,973	11,946

*If developed at 2
acres per home*

Development Capacity 2032

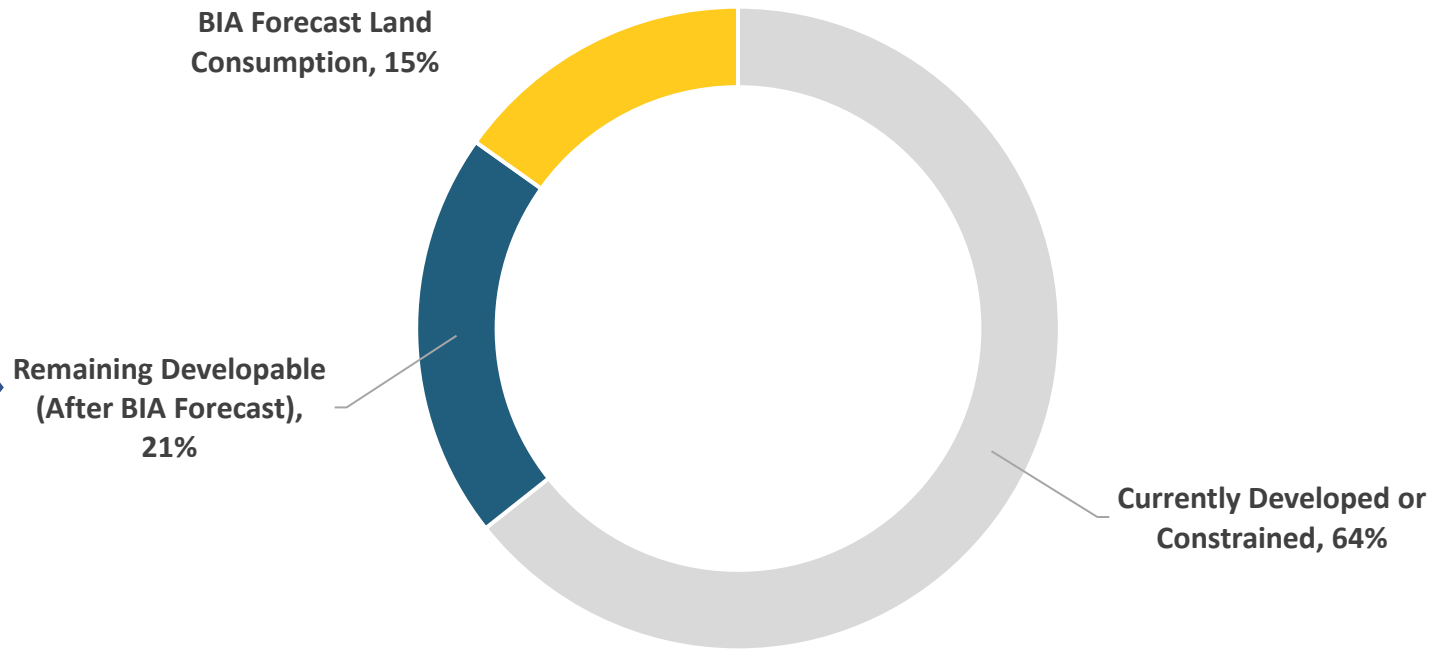
Developable Land Projection



Development Capacity 2032

Developable Land Projection

Has to accommodate future commercial, industrial, future growth and agriculture



Includes conserved agriculture



Themes

- Serve as the “goals” of the comprehensive plan
 - Revised based on what we’ve learned to date
-

Themes

Are these important considerations?

- **Individuals.** Please read each one carefully and circle whether they are important to the community or not. Comments explaining your answer are encouraged, but not required. Please note anything that might be missing.



Proposed 2023 Themes

- 1. Managing growth in a sustainable way, revitalizing existing communities, and supporting new development in appropriate locations**
- 2. Ensuring growth that benefits all communities**
- 3. Supporting appropriate economic expansion, retail services that meet local communities, downtown revitalization, and a strong agricultural economy**
- 4. Preserving rural character and natural resources**
- 5. Ensuring the provision of public services, utilities, and infrastructure to support communities and growth, while remaining fiscally responsible**
- 6. Supporting appropriate growth management tools at the county and local level fiscal sense**
- 7. Increasing dialogue between citizens and their communities, establishing strategic partnerships**

Mapping Exercise

Mapping Exercise

Where should development happen over the next 10 years?

- **Individually:** Reflect about the places where you would like to see different types of development and open space protection
 - **Residential**
 - **Commercial**
 - **Employment**
 - **Greenspace to be protected**
- There are no right or wrong answers



Mapping Exercise

Where should development happen over the next 10 years?

- **Group.** Identify clusters of dots and note any emerging trends. Discuss what makes these places ideal for housing, commercial, or employment development and places for protecting open space. Feel free to write comments using the post-it notes.
- **Reporting out.** A group speaker should share a summary of the group's findings with everyone else in attendance.



Next Steps

Next Steps

- **March to May – Plan Development**

Steering Committee will be reviewing your input as the process moves towards a refined growth concept, prioritized development sites, future land use recommendations prepared, and the plan will be drafted

- **June – Public Meeting**

At the next public meeting, those results and the draft plan will be presented for additional public comment

- **July – Adoption**

Regional Planning Commission and County Commissioners public hearings



Thank you!

